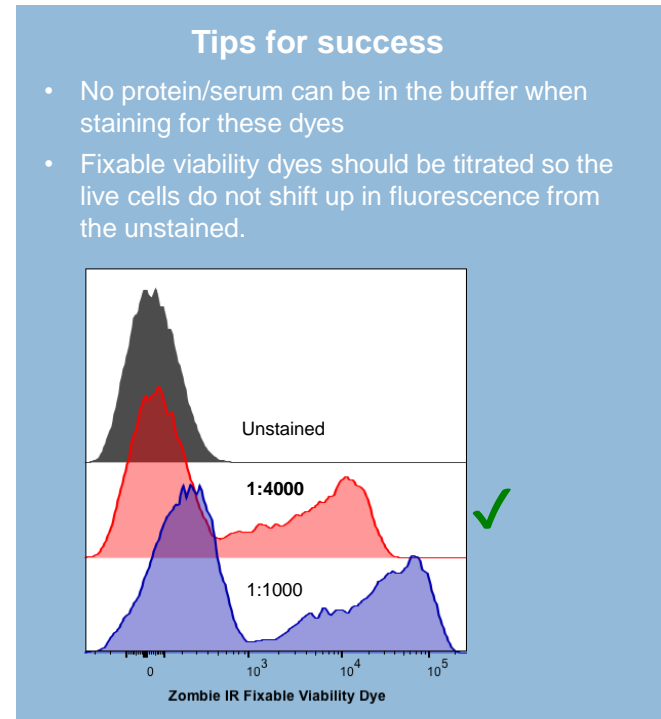
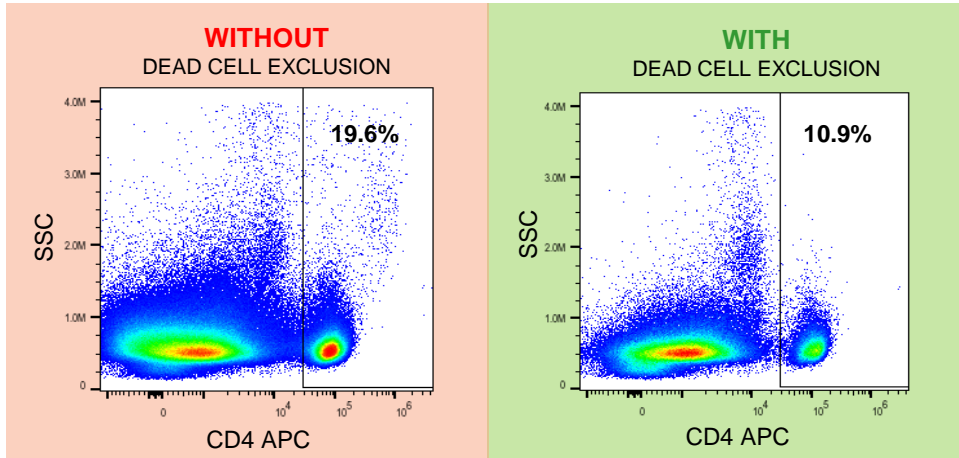
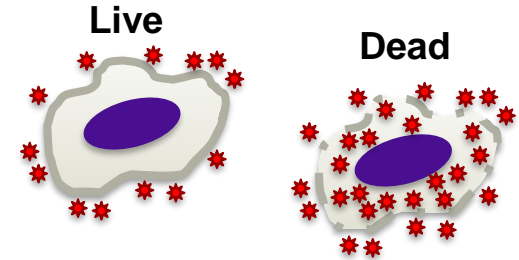


Fixable Viability dyes should be included in **every experiment** with surface and/or intracellular staining where fixation is required.

What are fixable viability dyes?

All mammalian cells have amines that are present both on the surface and inside of the cell. Fixable viability dyes are amine reactive and will covalently bond to these amines, resulting in an irreversible staining. Dead cells can be distinguished due to a higher level of fluorescence intensity due to compromised cell membranes.



Why should we use them?

Antibodies can **non-specifically bind dead cells**, resulting in false positive results and poor statistical data. This makes the inclusion of a viability dye vital for a successful Flow Cytometry experiment. Fixable viability dyes are available from a variety of vendors and offer the flexibility of assessing cell viability while staining for both surface and intracellular markers of interest. It is amenable to fixation and permeabilization due to the nature of the binding.